

SSL-VPN 使用手冊

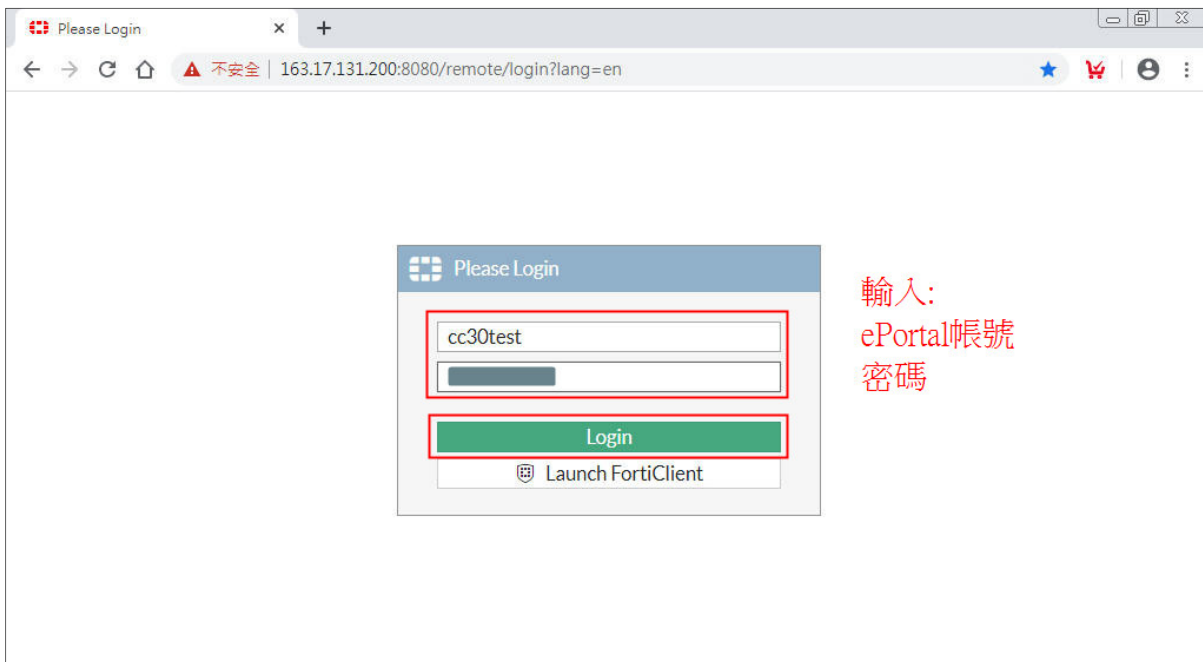
電算中心網路工程組
(109.5)

一、在 Windows 安裝連線軟體 (FortiClient)

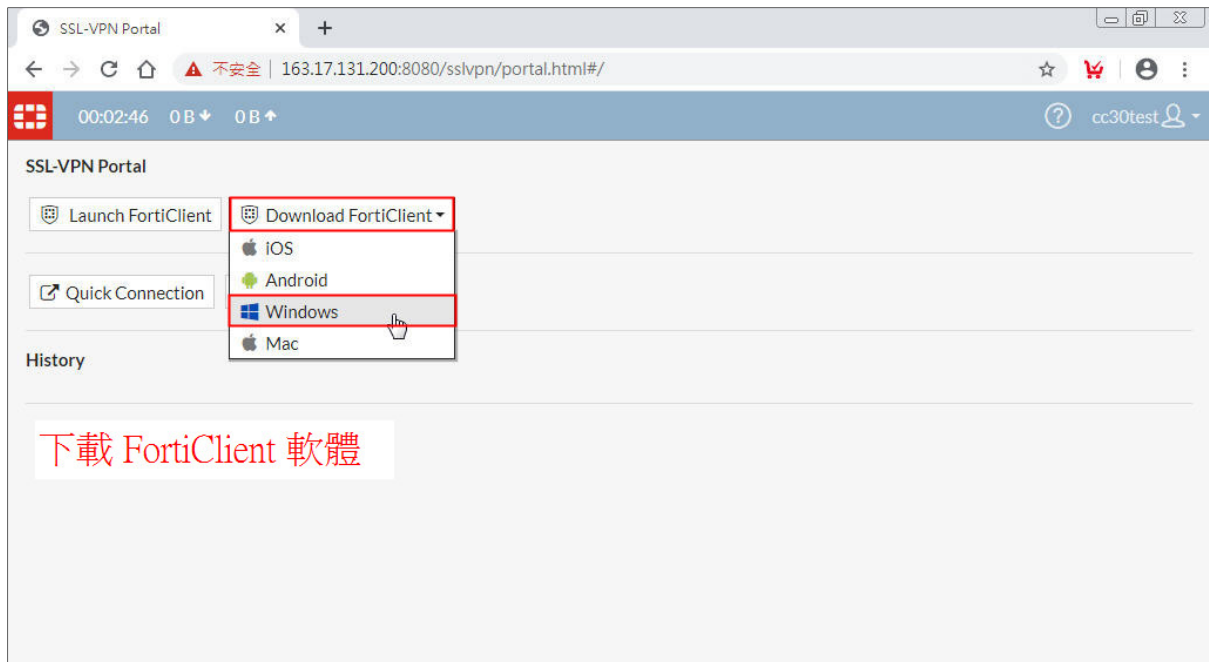
1.



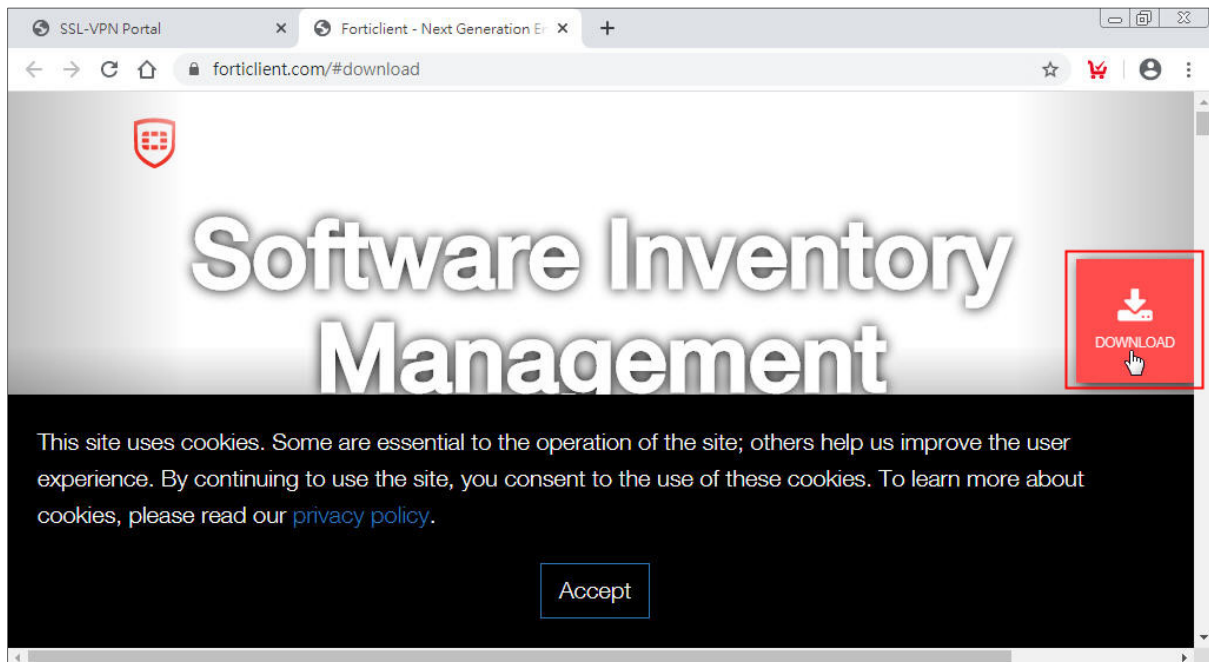
2.



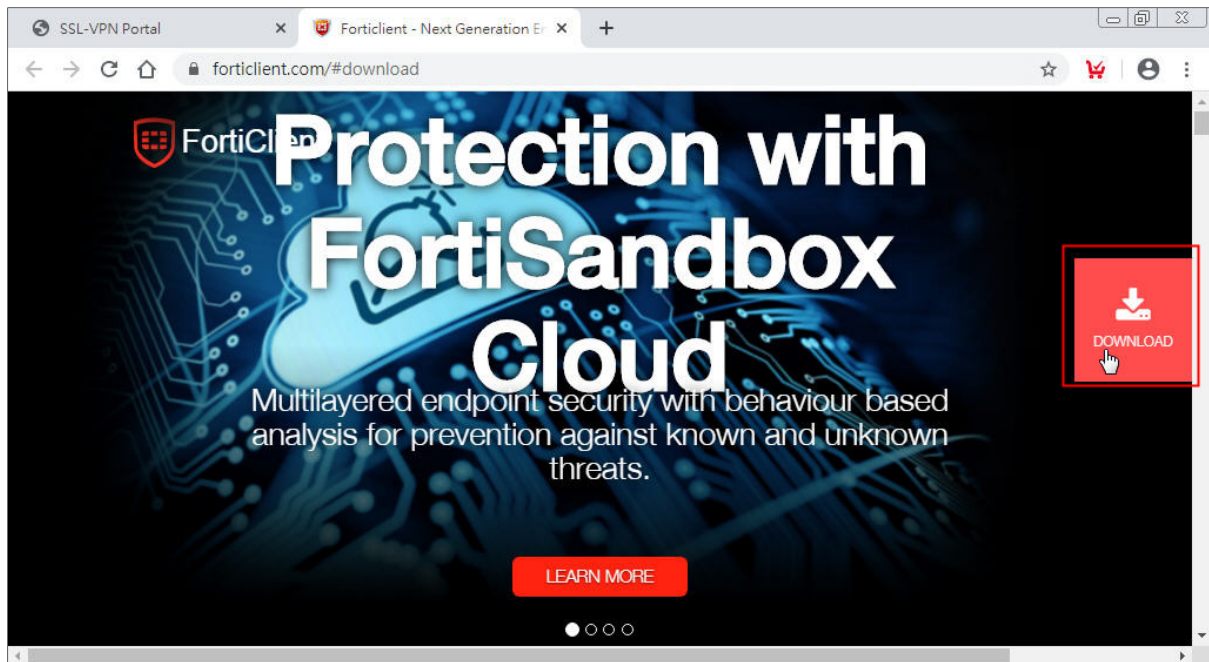
3.



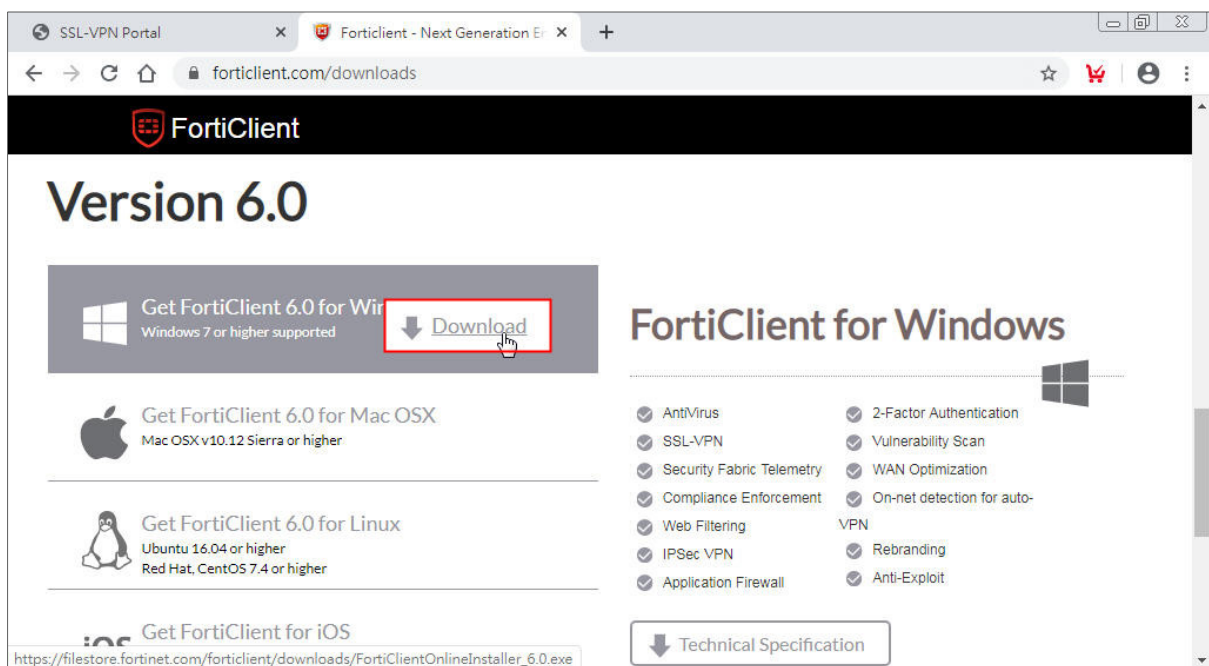
4.



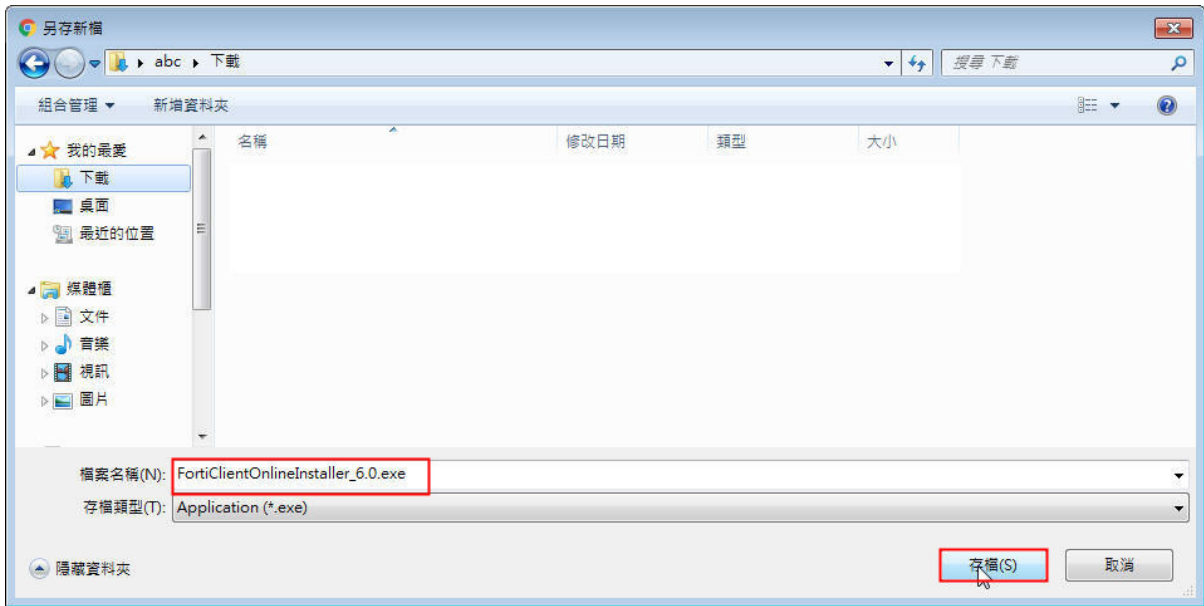
5.



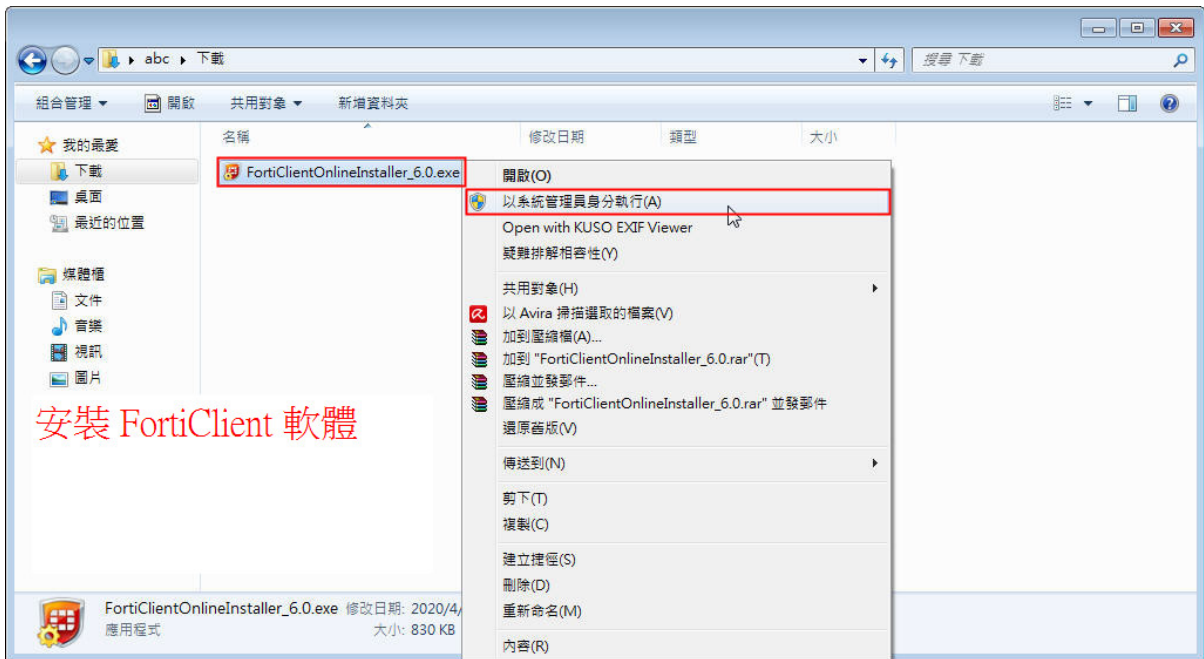
6.



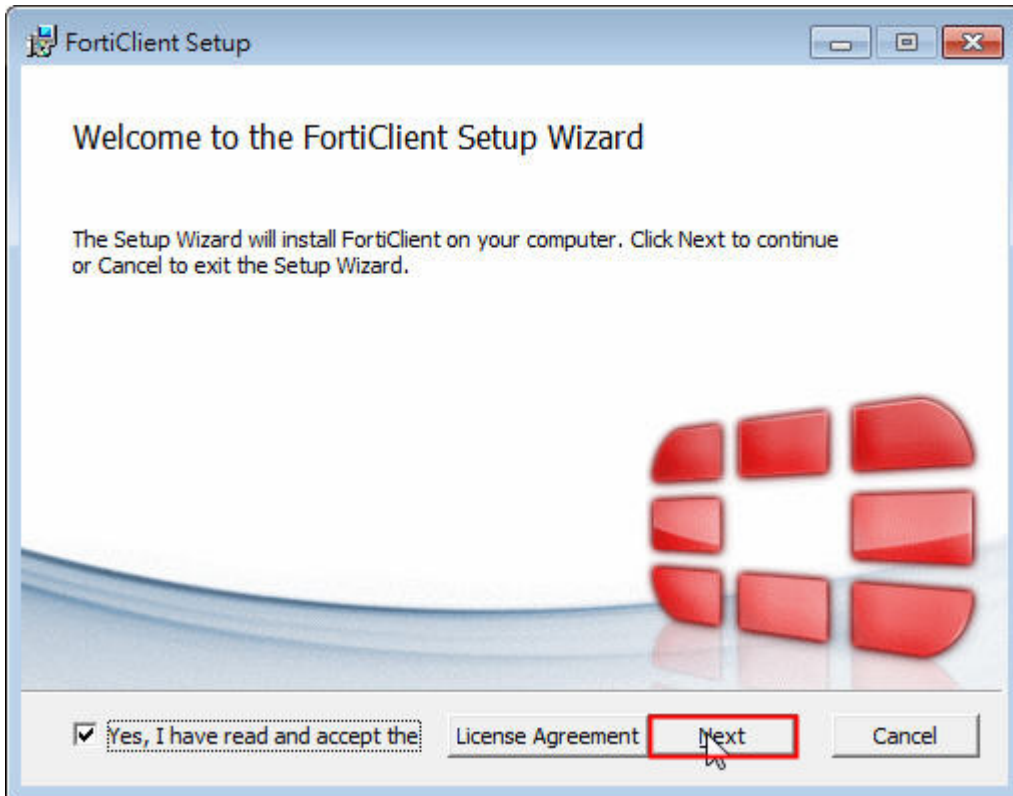
7.



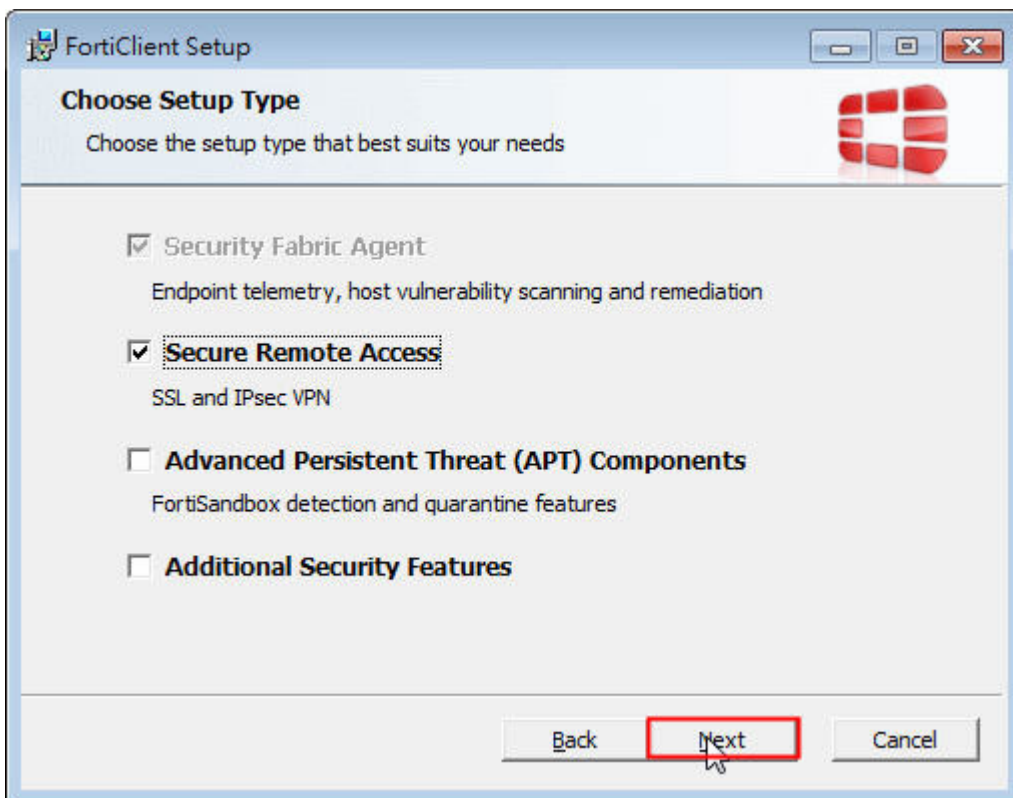
8.



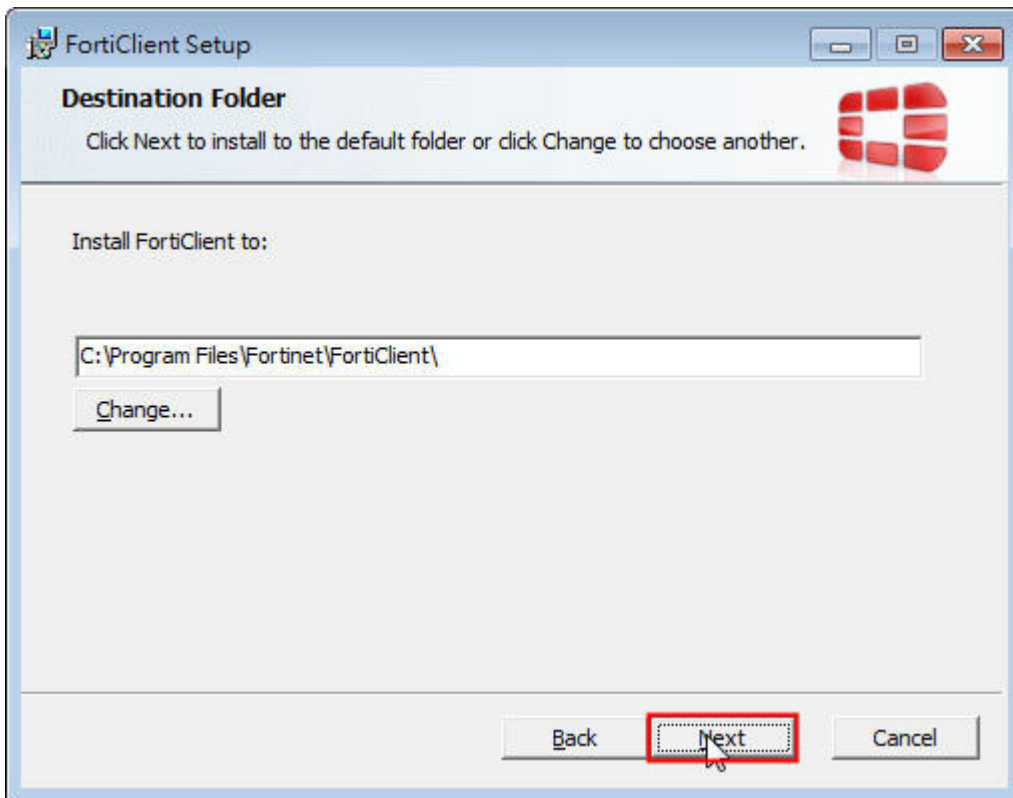
9.



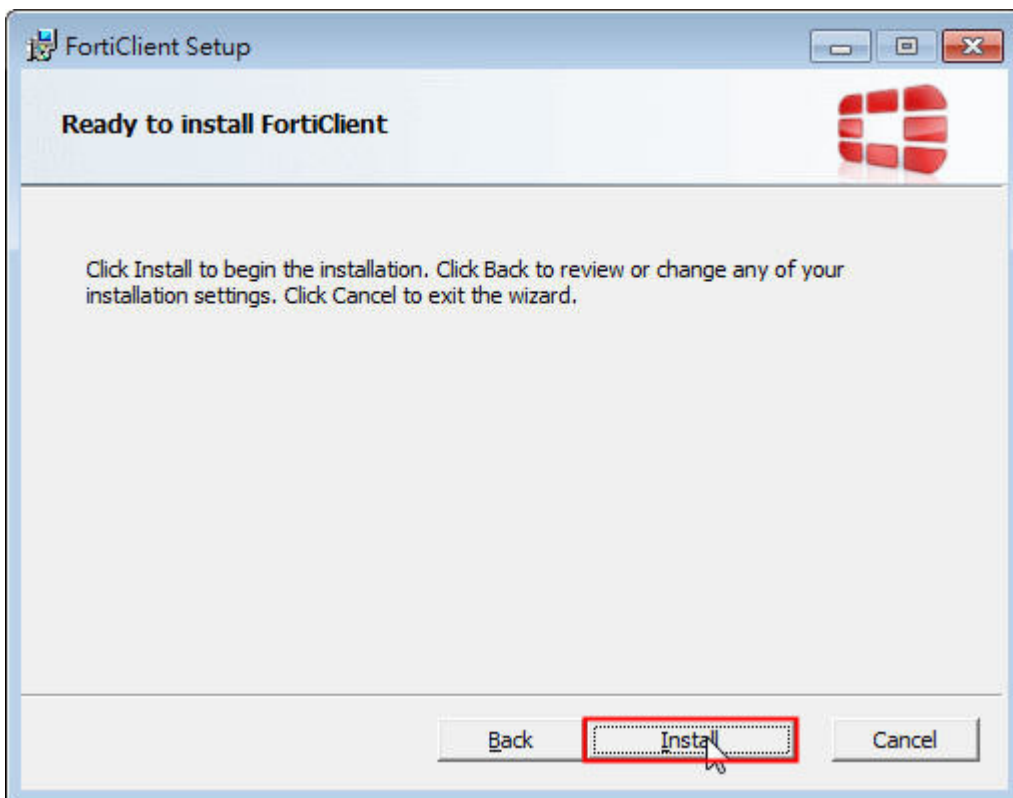
10.



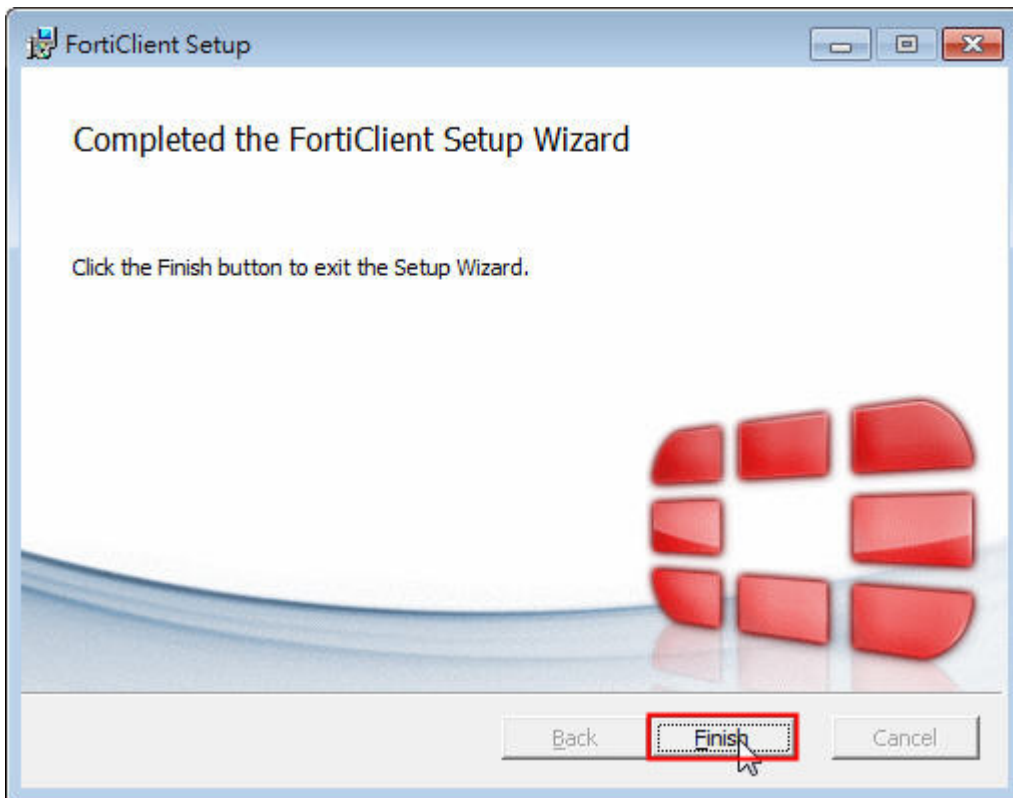
11.



12.



13.

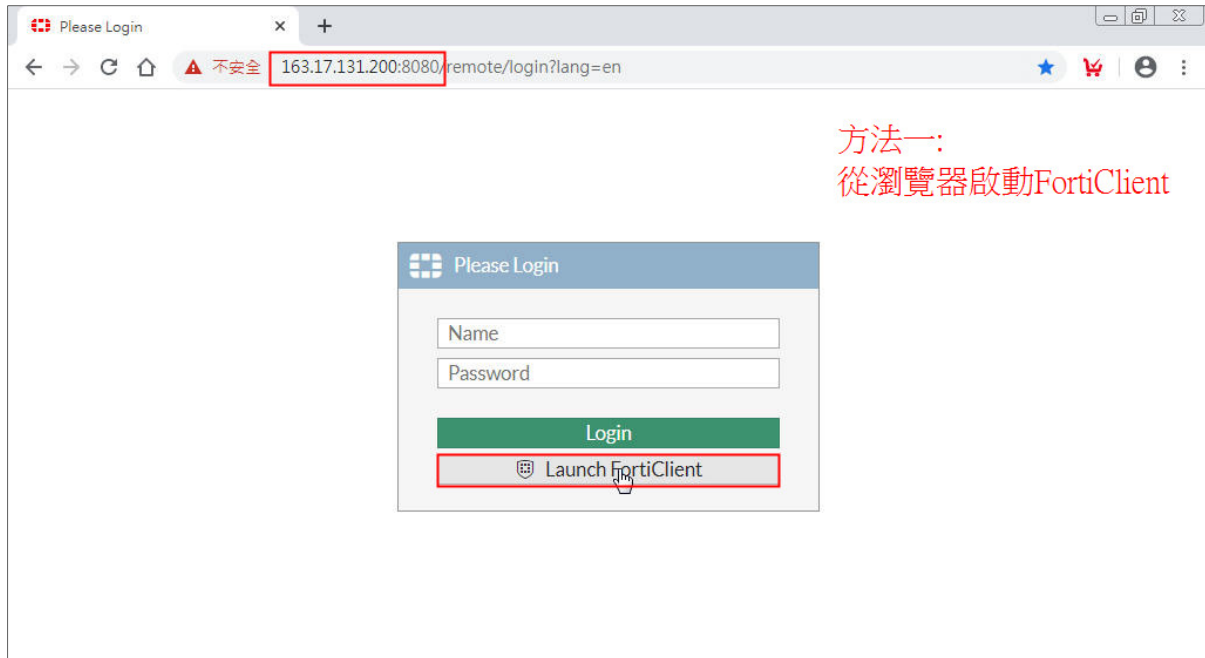


14.

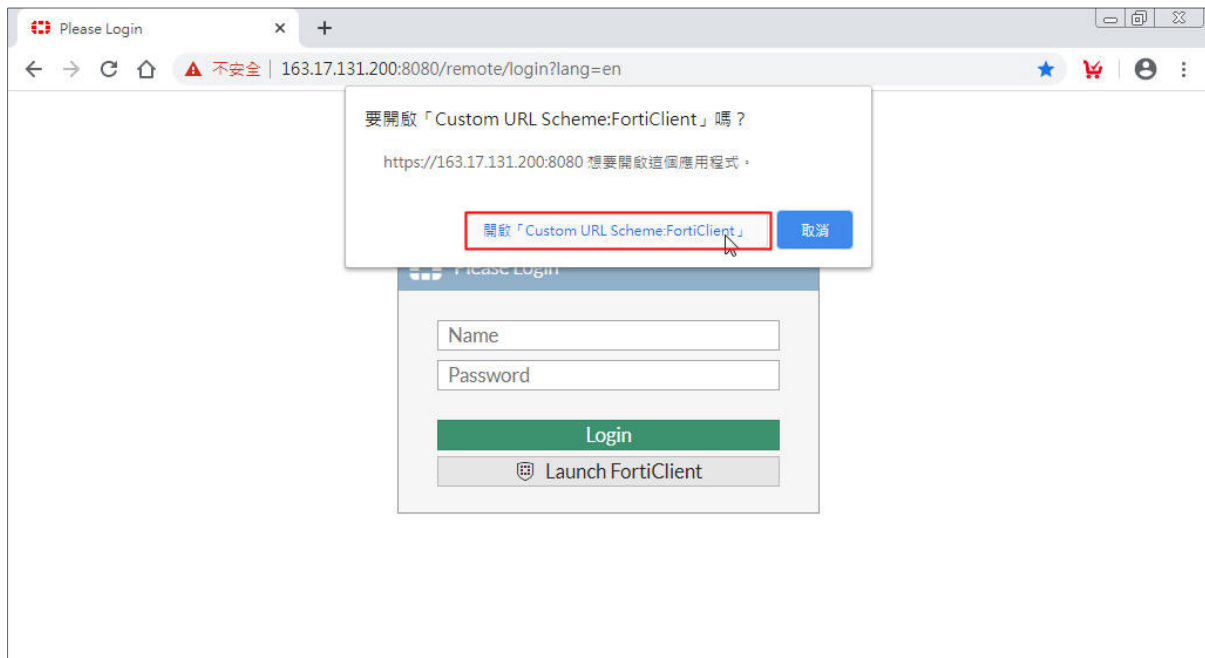


二、第一次啟動 FortiClient 軟體

1.



2.



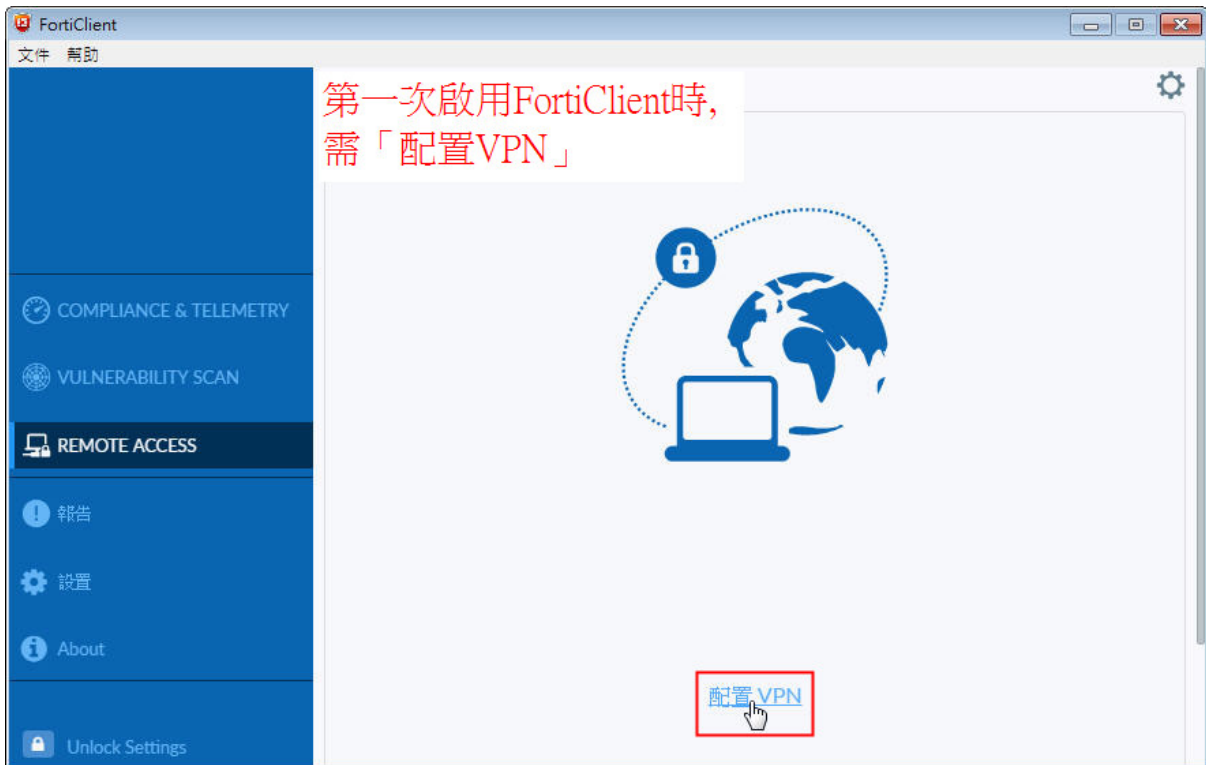
3.



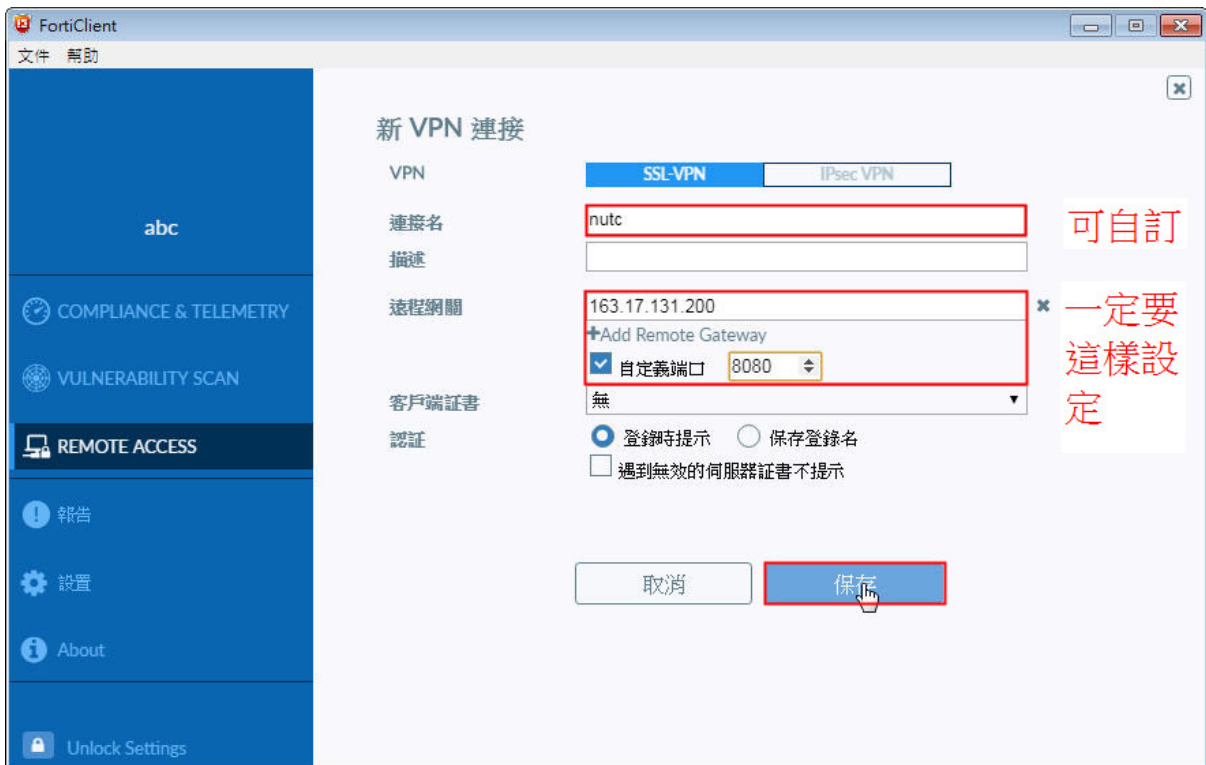
4.



5.

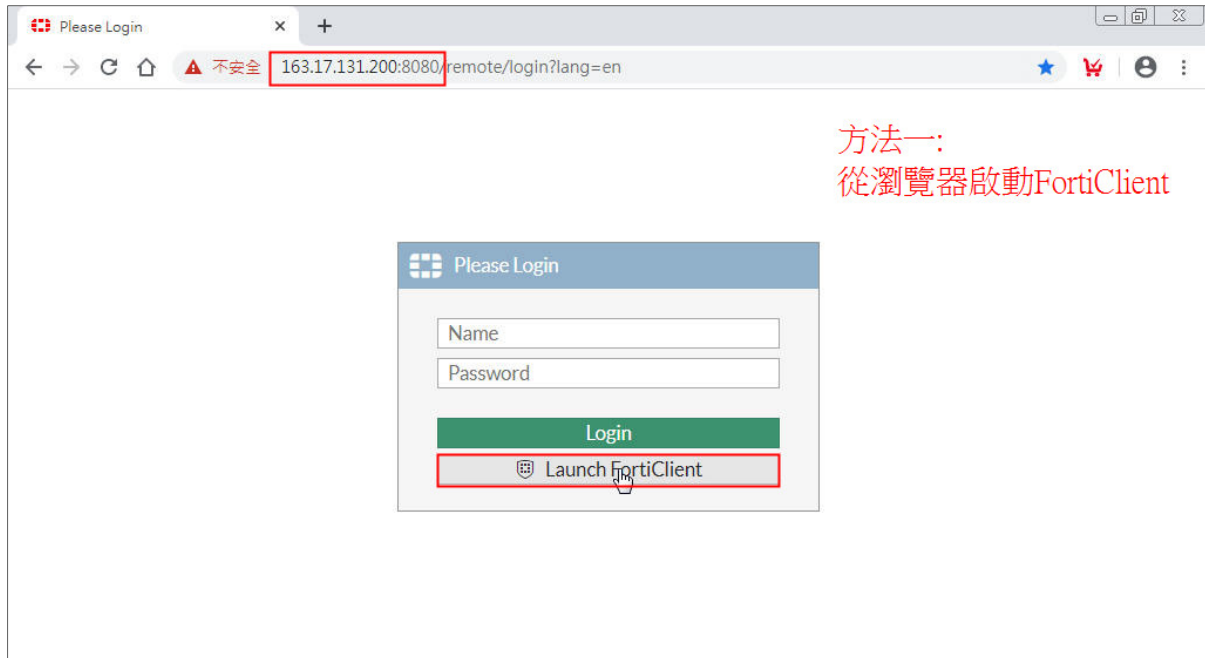


6.

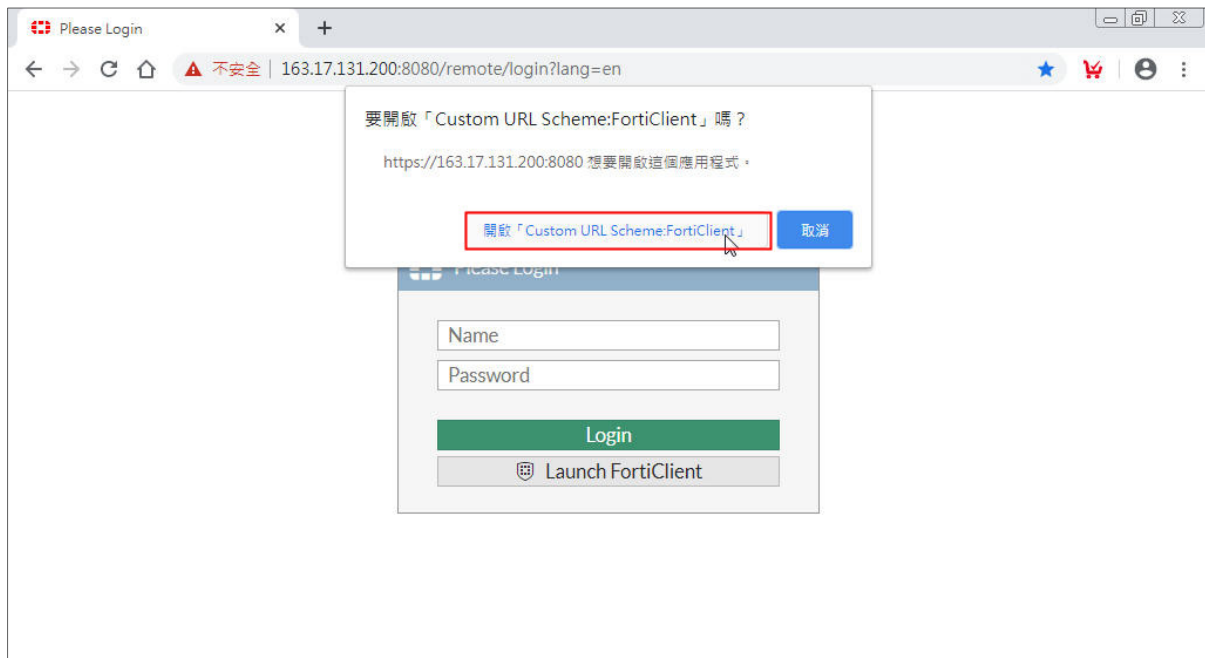


三、啟動 FortiClient 軟體，登入 SSL-VPN

1.



2.



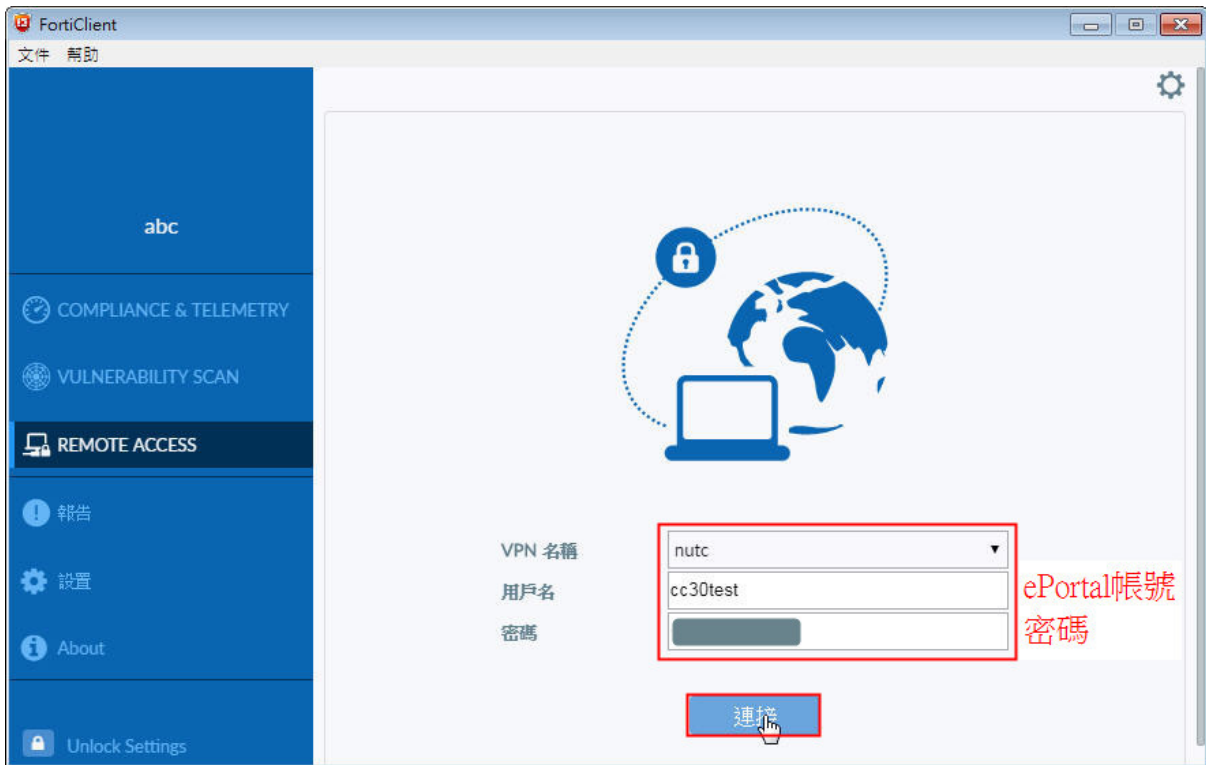
3.



4.



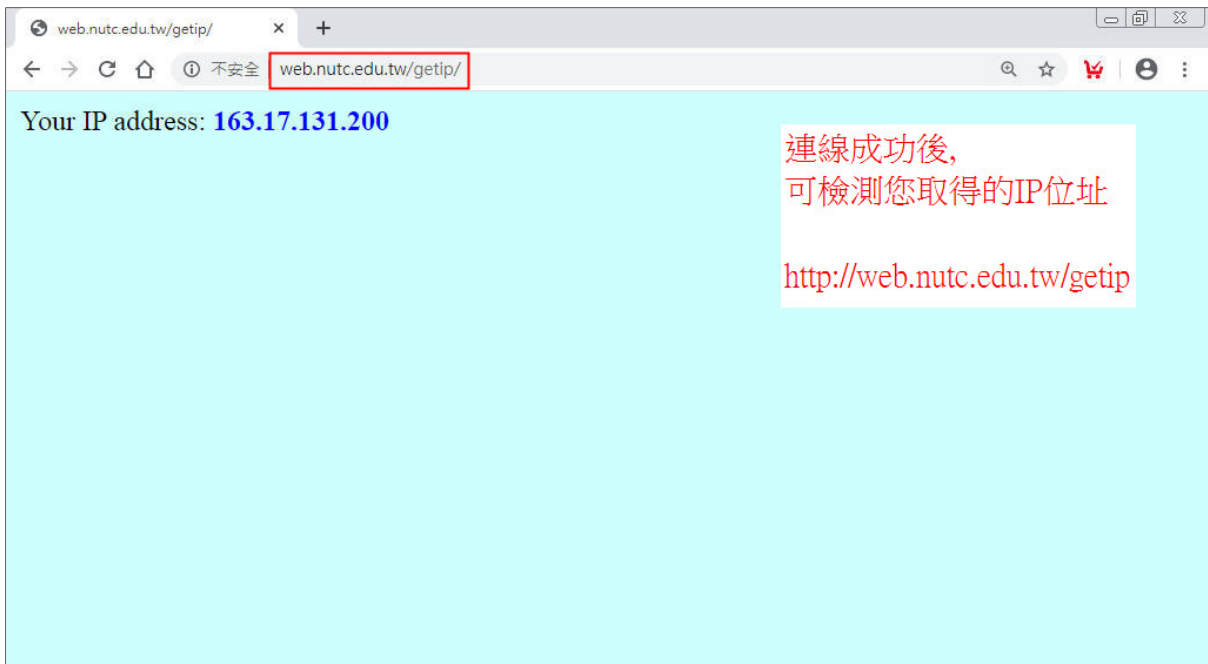
5.



6.

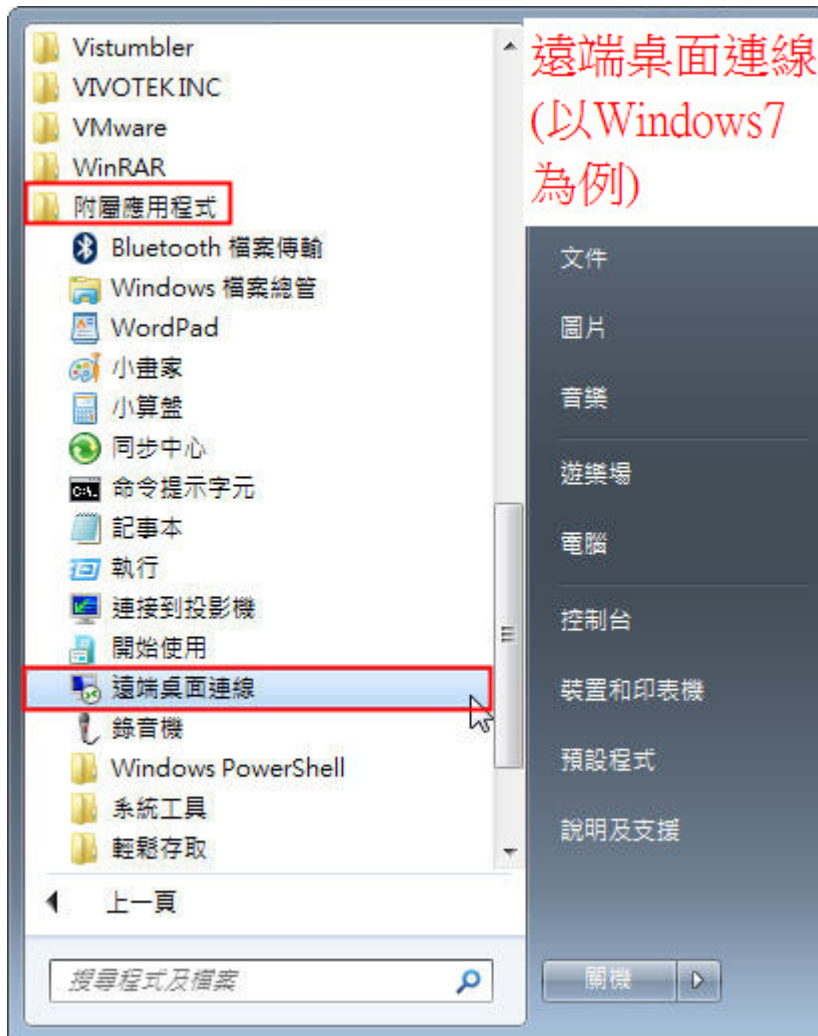


7.

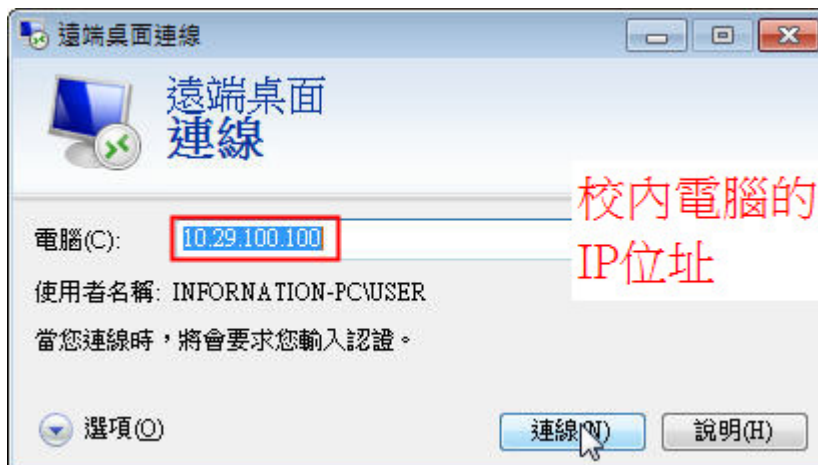


四、登入 SSL-VPN 後，遠端桌面連線至校內電腦 (Windows)

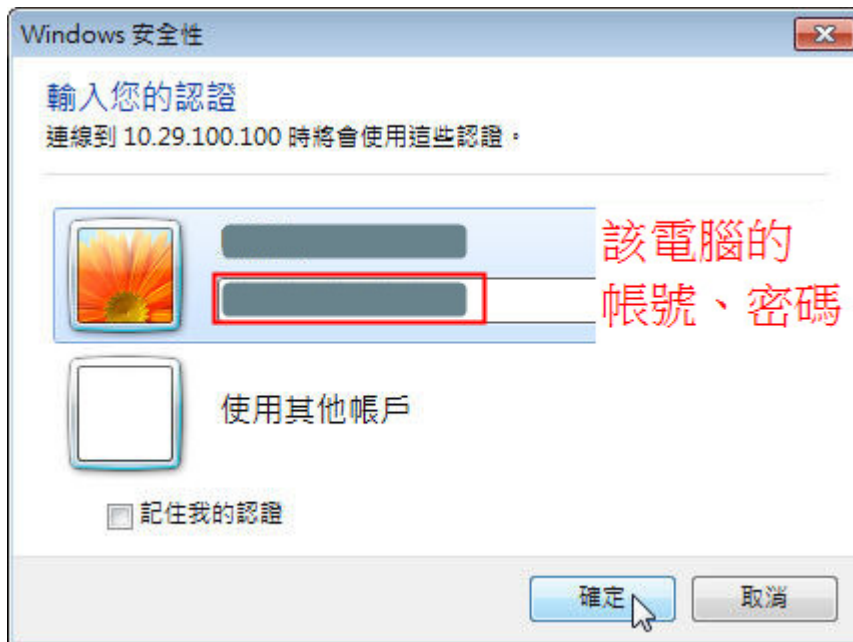
1.



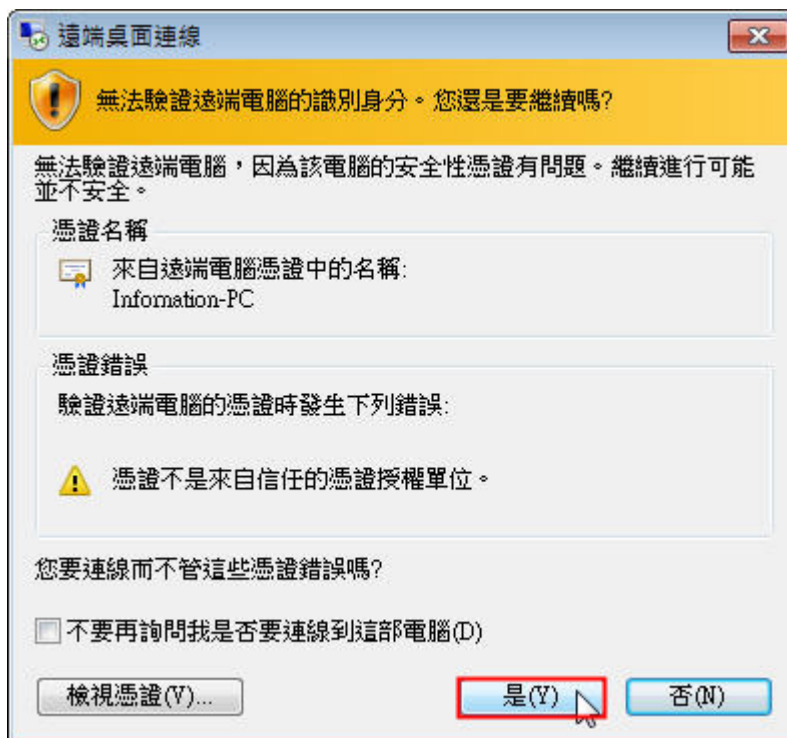
2.



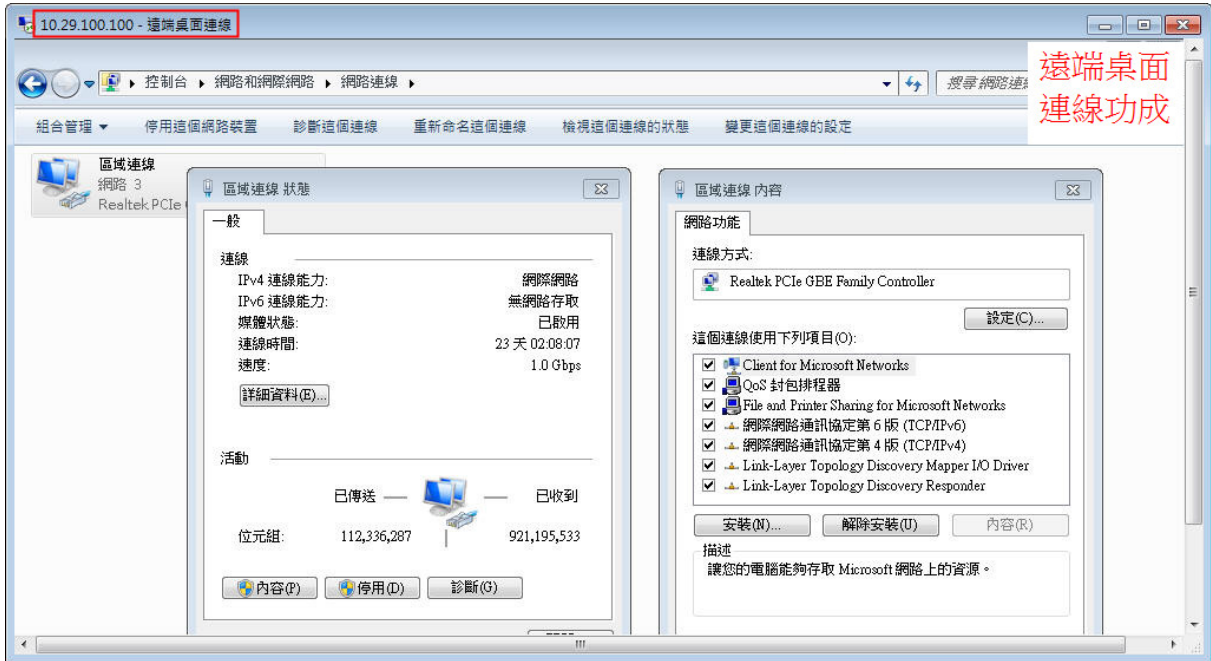
3.



4.



5.



遠端桌面
連線功成